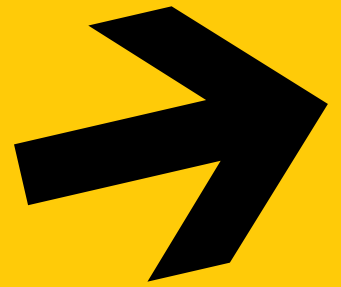


# Methodology for Assessment of Civil Defence Protective Structures Accessibility

**SHELTER**



Author: **Volodymyr Vysotskyi**  
Editor: **Iryna Fedorovych**  
Corrector: **Serhiy Shkabara**  
Layout and design: **Maksym Afanasyev**

**FIGHT  
FOR  
RIGHT**



Support to Civil Society  
Organisations in Ukraine

This publication is implemented by NGO Fight for Right thanks to a grant received from the Program «Support of civil society organizations (CSOs)» in Ukraine within the financial support of the Embassy of Great Britain. The program is implemented by Crown Agents in partnership with International Alert and in cooperation with Crown Agents in Ukraine.

The content of publication does not necessarily reflect the views of the Embassy of Great Britain, the views of Crown Agents, International Alert and Crown Agents in Ukraine.

**No part of this publication may be reproduced, stored in a retrieval system, or transmitted, in any form, or by any means, mechanical, electronic, photocopying, recording, or otherwise, without the prior written permission of the NGO “Fight for Right”.**

**To find out more about the NGO “Fight for Right” and its activities, please visit:**

**<https://ffr.org.ua/en/>**

# Contents

List of Abbreviations	4
<b>Research Framework</b>	<b>5</b>
<b>Legal Framework Prior to the Full-scale Invasion</b>	<b>6</b>
<b>Improvement of the Legal Framework During the Martial Law</b>	<b>7</b>
Introduction of accessibility standards into DBN B.2.2-5:2023 “Civil defence protective structures”	8
Key provisions regarding the accessibility of shelters for PRM	9
Civil defence protective structures accessibility audit tool	11
<b>Taking key measurements during CDPS accessibility assessment</b>	<b>13</b>
<b>Analysis of shelter accessibility for PRM in selected regions</b>	<b>20</b>
Results of accessibility assessments of civil defence protective structures in Kyiv (20 locations) and Dnipro, Kharkiv, Kostiantynivka, Kramatorsk, Hadiach, Manevychi and Pervomaisk (3 locations in each city).	20
Fieldwork conclusions	29
<b>Annex 1</b>	
<b>Assessment Tool (checklist and report)</b>	<b>31</b>

## LIST OF ABBREVIATIONS

**DBN** – State Building Standards (“Derzhavni Budivelni Normy”)

**CDPS** – civil defence protective structures

**PRM** – people with reduced mobility

**DPS** – dual-purpose structures

# Research Framework

With support from Crown Agents under the project “Promoting Accessibility of Civil Defence Protective Structures” NGO “Fight for Right” has conducted research of (in)accessibility of shelters.

The aim of the project was to advocate for changes in the legal framework regulating civil defence protective structures and to promote standards for their inclusive renovation.

## Project goals:

- to analyze the gaps and changes in the normative regulation of civil defence protective structures standards;
- to analyze the current condition of civil defence protective structures in large cities;
- to develop a methodology for quick assessment of civil defence protective structures accessibility that could be used by activists throughout Ukraine;
- to draw recommendations on inclusive shelter renovation.

## To achieve the project goals several the following methods were used:

- **analytical** – analysis of the legal framework regulating the civil defence protective structures;
- **practical** – accessibility audit of civil defence protective structures using the developed CDPS accessibility assessment tool.

## Stages of research and analysis:

- development of a tool for field assessment of shelters (civil defence protective structures) accessibility;
- piloting of the tool in Kyiv – accessibility of 20 shelters assessed;
- conduction of training on the tool use for activists from different regions;
- obtaining data and studying the accessibility assessment checklists completed during accessibility audits in other cities: Dnipro, Kharkiv, Kostiantynivka, Kramatorsk, Hadiach, Manevychi and Pervomaisk;
- development of guidelines and recommendations for the renovation of civil defence protective structures.

# Legal Framework Prior to the Full-scale Invasion

As of February 24<sup>th</sup> 2022 the requirements for civil defence protective structures were set by the state building standards – [DBN B.2.2.5-97 “Buildings and structures. Civil defence protective structures”](#). These standards contained no provisions regarding the accessibility of civil defence protective structures (hereinafter referred to as ‘CDPS’). In reality this meant that during the construction, capital renovation and/or reconstruction no accommodations for people with reduced mobility (hereinafter referred to as PRM) were provided – including means for independent entry, barrier-free movement and comfortable stay inside the shelters, and accessible sanitary facilities. Therefore, as of the time of the full-scale invasion on February 24<sup>th</sup> 2022, in addition to the unsatisfactory technical and sanitary condition almost 100% of all shelters existing in Ukraine were completely inaccessible for PRM and people with disabilities in particular.

# Improvement of the Legal Framework During the Martial Law

On August 10<sup>th</sup> 2023 the Ministry for Communities, Territories and Infrastructure Development of Ukraine (Ministry of Infrastructure) approved the new state building standards (hereinafter referred to as DBN) regarding the construction of civil defence protective structures.

According to these standards, civil defence protective structures and dual-purpose structures must be envisaged in residential and civic buildings, including schools, kindergartens and hospitals, in order to ensure the citizens' protection from the threats resulting from emergency situations, military actions (warfare) or terrorist acts.

The document aims to provide a maximum number of citizens with modern-day, reliable and accessible shelters.



[DBN B.2.2-5:2023 “Civil defence protective structures”](#) was developed by a working group composed of experts from the Ministry of Infrastructure, State Emergency Service, Ministry of Social Policy, Ministry of Education and Science, Ministry of Health, project and research institutes, specialists in sanitary and fire safety, practicing architects and civil engineers, developers, representatives of civil society organizations (representatives of the Public Union “The League of the Strong”, of which NGO “Fight for Right” is a member, took part in the development of new standards).

During the development of the new DBN we studied the international experience of shelter design and construction, analyzed the most common damages to Ukrainian infrastructure, specified and completed relevant calculations. In addition to establishing the requirements for the shelters’ protective features, special attention was paid to the inclusivity of CDPS in order to ensure their accessibility for various groups, including people with disabilities and people with reduced mobility.

## **Introduction of accessibility standards into DBN B.2.2-5:2023 “Civil defence protective structures”**

The new DBN features an innovative approach to regulating inclusivity of civil defence protective structures.

Civil defence protective structures are engineered facilities designed to protect the population from the impact of dangerous factors arising from emergencies, war actions or terrorist acts ([Code of Civil Protection of Ukraine](#)).

Civil defence protective structures [include](#):

- **shelters** – sealed structures for protection of population that provide temporary conditions excluding the impact of dangerous factors arising from emergencies, war actions or terrorist acts;
- **anti-radiation shelters** – non-sealed structures for protection of population that provide conditions excluding the impact of ionizing radiation in case of radioactive contamination and use of conventional arms.

Another means for protecting the population are dual-purpose shelters – ground or underground buildings/structures or their separate parts, designed or adapted for its main functional purpose, i.e. for protection of population, and providing conditions for temporary stay.

During the special period, the increase in the number of civil defence protective structures is achieved through construction of prefabricated civil defence protective structures and creation of simplest shelters:

- **prefabricated civil defence protective structure** is a structure that is built (made, assembled) in a short period of time using special structural elements (items) that fulfill the requirements of building norms, standards and regulations;
- **simplest shelter** is a fortified structure, socle or basement premise, or other underground structure providing temporary stay conditions and designed to reduce the combined negative impact of dangerous factors, as well as damage from arms during the special period.

The structures that were assessed in the course of the project were mostly simplest shelters – socle or basement premises in residential buildings, schools and/or kindergartens, and underground parking spaces. Accessibility audits were also carried out in several hospital-based anti-radiation shelters.

## Key provisions regarding the accessibility of shelters for PRM

Section 5 of the new DBN is entitled “General Provisions” and defines the key requirements for the civil defence protective structures. Paragraph 5.12 of this Section specifies that the “design of protective structures and DPS must ensure accessibility and safety of PRM in compliance with DBN B.2.2-40 “Inclusivity of buildings and structures. Basic provisions”, and consider the mobility of people with different disabilities and their quantity”.

This provision was introduced thanks to an active and firm stance of the civil society representatives in the working group, including representatives of PU “The League of the Strong” and NGO Fight for Right, and was aimed at:

- ensuring that the requirements contained in [DBN B.2.2-40 “Inclusivity of buildings and structures. Basic provisions”](#) (key DBN encompassing the requirements for accessibility of the built environment, based on DSTU B ISO 21542:2013 “Building construction. Accessibility and usability of the built environment” (ISO 21542:2011, IDT) apply to CDPS;
- eliminating risks of neglect of the accessibility requirements during creation (construction, capital renovation, reconstruction) of shelters of all types (anti-radiation and dual-purpose structures).

Section 7 of the new DBN is entitled “Spatial planning solutions” and specifies the key parameters of the CDPS spatial organization. Thanks to the persistent stance of the representatives of the civil society this Section was supplemented by the following key provisions related to the accessibility of shelters for PRM:

- p. 7.1.1 “Design of protective structures and DPS must ensure accessibility and safety of PRM in compliance with DBN B.2.2-40 and consider the mobility of people with different disabilities and their quantity. Entrances, lobbies, stairways, ramps, landings, premises, passageways inside the building or structures, furnishings and interior elements of protective structures and DPS must comply with DBN B.2.2-40. Where a raised threshold is necessary at a door opening (protective entrance doors, sealed doors, protective and sealed doors), folding or portable ramps must be installed”;
- p. 7.1.2 “To ensure protective structures and DPS accessibility for PRM, it is necessary to install ramps in compliance with DBN B.2.2-40 (...) Where installation of a ramp is impossible, it is recommended to provide reasonable accommodation in the form of lifting platforms, mechanisms, etc. (...) It is recommended that access of PRM to protective structures and DPS is provided via lifts. Clear ground space for wheelchair maneuvering and 90-degree turn must be provided in front of the entrances to protective structures and DPS in compliance with DBN B.2.2-40”;
- p. 7.1.3 “Premises of protective structures and DPS must provide safety, wayfinding and information features in compliance with DBN B.2.2-40. Wall-mounted visual navigation systems must contain information regarding the purpose of facilities and relevant passageways. Protective structures and DPS must provide means for tactile navigation, including tactile information signs, contrasting marking of steps, thresholds, doorways, as well as narrowed sections of corridors. In addition to contrasting colors, it is recommended to use reflective materials that ensure visual identification in the absence of lighting”;
- p. 7.1.4 “Clear width of corridors and ramps inside protective structures and DPS used for evacuation, including PRM, must be:
  - at least 1,8 m – in case of new construction;
  - at least 1,5 m – in case of reconstruction;
  - at least 1,2 m – in case of capital renovation.
- Wall-mounted handrails at the height of 0,9 m should be installed along the sections of corridors used for evacuation. The dimensions and fitting of handrails must comply with DBN B.2.2-40. The colour

of the handrails must be contrasting to the colour of the wall on which they are mounted. It is recommended to apply reflective paint (material) to the handrails to ensure visual identification in the absence of lighting”;

- p. 7.1.5 “Height of protective structures and DPS premises (from floor to ceiling) should be at least 2,5 m. This requirement may be applied during the reconstruction of existing protective structures and DPS (where it is technically possible). When specifying the height of DPS premises it is recommended to apply the requirement set for specific facilities – according to their functional purpose that is not related to protection and reducing the impact of dangerous factors on people”;
- p. 7.1.7 “Clear width of interior doorways within the premises must be at least 0,9 m. Clear width of a single wing of a double-winged door must be at least 0,9 m. Doors should be equipped with lever door handles. Doors leading to premises and between corridors must have flush thresholds (except doors leading to technical premises – electric control room, ventilation control room, etc.) Where a raised threshold is necessary at a door opening, it must comply with DBN B.2.2-40. (...) During capital renovation, installation of exterior and interior doors with clear width of at least 0,8 m is allowed”;
- p. 7.2.1.4 “In shelters and DPS with protective features for up to 100 people, designated for sheltering of an entity personnel (staff), it is allowed to envisage a minimum number of primary and secondary facilities that provide for their intended use. Such facilities include: (...) universal sanitary facility (...)”;
- p. 7.4.2 “Sanitary facilities are designed in compliance with state standards and regulations, DBN B.2.2-9 та DBN B.2.2-40”;
- p. 7.4.4 “During new construction of protective structures and DPS, at least one universal sanitary facility complying with DBN B.2.2-40 must be envisaged (one such facility for every 200 people)”.

## **Civil defence protective structures accessibility audit tool**

To conduct accessibility assessment of civil defence structures in selected regions we have developed an accessibility audit tool – a checklist ([see Annex 1](#)). The piloting of the checklists was completed in Kyiv, and the experience gained led to further improvements of the checklists and development of an online training session for activists, willing to conduct local shelters accessibility assessments in their respective cities.

The structure of the checklist implies an inspection and assessment of the structure's key elements' (in)accessibility. It is based on the accessibility criteria laid down in the [DBN B.2.2-40 "Inclusivity of buildings and structures. Basic provisions"](#).

During the audit, the specified elements of the structure, its adjacent area and pedestrian walkways were measured, and their condition evaluated. In total, the audit covered 6 (six) key elements of the built environment:

- 1) adjacent area;
- 2) shelter entrance;
- 3) entrance doors;
- 4) horizontal circulation (corridors, passageways);
- 5) main premise;
- 6) sanitary facility.

Each of these elements was assessed by means of:

- measuring of spatial parameters and dimensions;
- visual evaluation of technical condition and space organization;
- counting the number of specific objects and devices (furniture units/seatings, fixtures, power outlets, heaters, etc.).

The audit also implied collection of additional data regarding sanitary and fire safety – humidity, lighting, fire alarms, etc.

Every section of the checklist allowed the participants to add their comments and/or observations that improved the informativeness to the collected data, as well as photographs of objects and adjacent area.

# Taking key measurements during CDPS accessibility assessment



## 1. Information and direction signs :

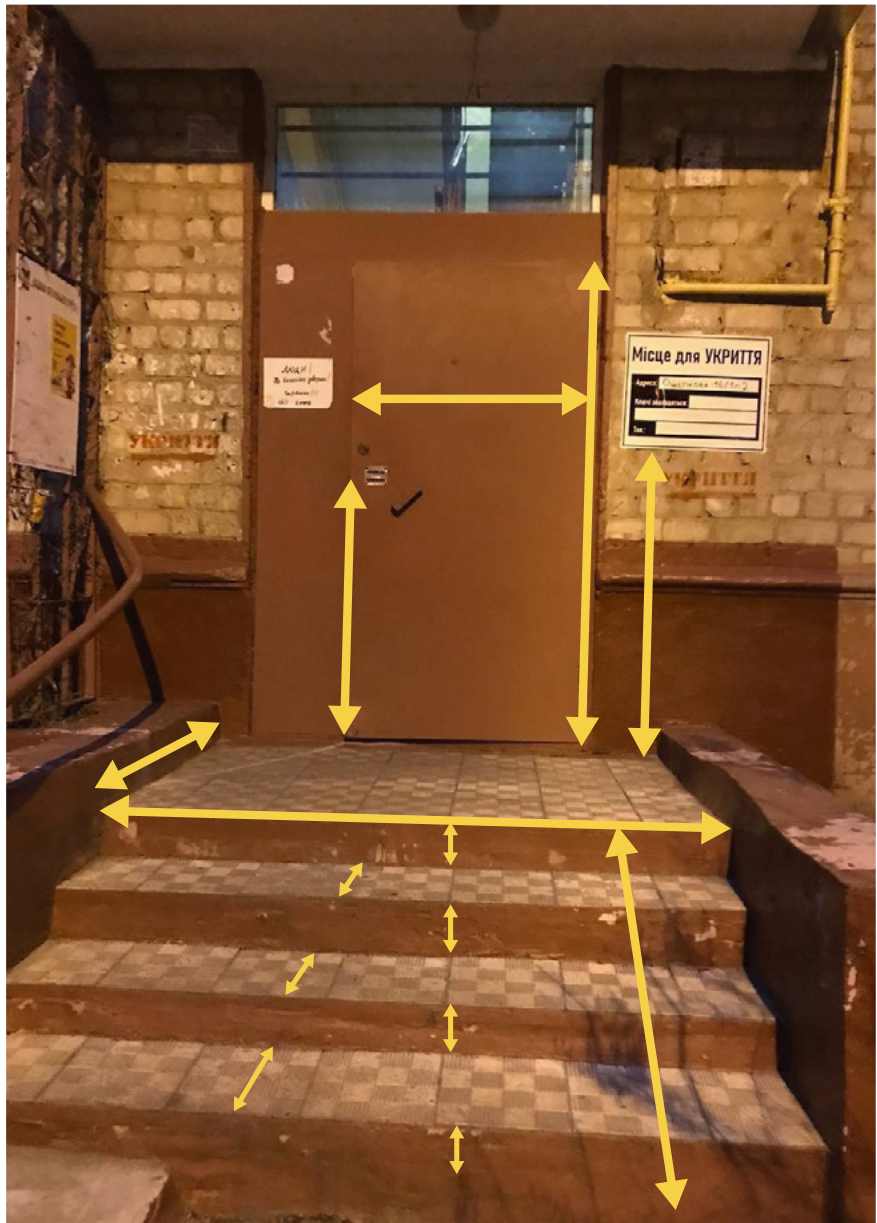
- Sign dimensions;
- Font size.



A white rectangular information sign with the word “Shelter” inscribed in red capital letters, placed on the wall of a residential white-brick building. The sign also bears an address – Beresteisky avenue, 60, the building owner – communal property of Kyiv city territorial community, the entity in charge – manager, and a telephone number of the dispatcher on duty – 500-81-03. The image also contains yellow double arrows showing the dimensions that need to be measured – the height and the width of the sign, as well as the height of the letters in the word “Shelter”.

## 2. Entrances:

- Overall height of stairs;
- Rise and going of steps;
- Dimensions of landing by the door;
- Door height and width;
- Door handle height;
- Information sign placement height.



Entrance to a white-brick residential apartment building. Massive light-brown metal door with code lock and four wide checkered tile-covered steps leading to it. On both sides of the door on the building's walls there are hardly visible inscriptions made with red paint reading "Shelter". On the right side of the door there is a new white rectangular sign "Place for sheltering". Above it is a yellow gas pipe. The image also contains yellow double arrows showing the dimensions that need to be measured: door height and width, door handle height, rise and going of steps, and the height of information sign.

### 3. Staircases by the entrance:

- Ceiling height;
- Staircase width;
- Overall height of stairs;
- Rise and going of steps;
- Handrail height.



Staircase in an old residential apartment building. On the left side of the concrete stairs there are red wooden handrails fixed to a metal balustrade. The lower half of the walls is painted light-green, the walls are worn out and the paint is flaky, with pieces of paint and plaster falling off. On the upper part of the wall, on the left side there is a LED lamp with the light turned on. The image also contains yellow double arrows showing the dimensions that need to be measured: staircase width and height, handrails height and height of ceiling.

**4. Horizontal circulation (passageways, corridors):**

- unobstructed passageway width and height;
- height of changes level;
- light switch placement height;
- power outlet placement height;
- door handle height.



Doorway leading into a corridor. The plaster on the walls is worn out and flaky, and the concrete floor is damaged. Above the doorway there is a fixture and on its left, there is a green blanket acting as an improvised curtain. The image also contains yellow double arrows showing the dimensions that need to be measured: doorway height, depth and width.

## 5. Furniture and equipment:

- seating height;
- seating dimensions;
- clear passageway width;
- handrails height (where available);
- light switch placement height;
- power outlet placement height.



A corridor in a recently renovated premise. The floor is covered with beige tiles, the walls are painted white. Along the walls there are pipes, wiring and other utilities, pointing to the fact that it is an underground premise. By the left wall there are three chairs with metal frames and gray wooden seating and backrests. On the background there are three brown benches of similar design. The image also contains yellow double arrows showing the dimensions that need to be measured: furniture units height, clear width of passageway between furniture units and the wall.

## 6. Sanitary facility:

- room width and depth;
- clear floor space dimensions;
- doorway clear width;
- sink placement height;
- toilet seat height;
- grab rails height (where available);
- light switch placement height;
- power outlet placement height.



Toilet room with lower half of the walls painted beige. On the left there is a sink with a curved faucet, and in the rear there is a toilet. The sanitary ware is new and white. The image also contains yellow double arrows showing the dimensions that need to be measured: doorway clear width, light switch placement height, toilet seat and sink placement heights.

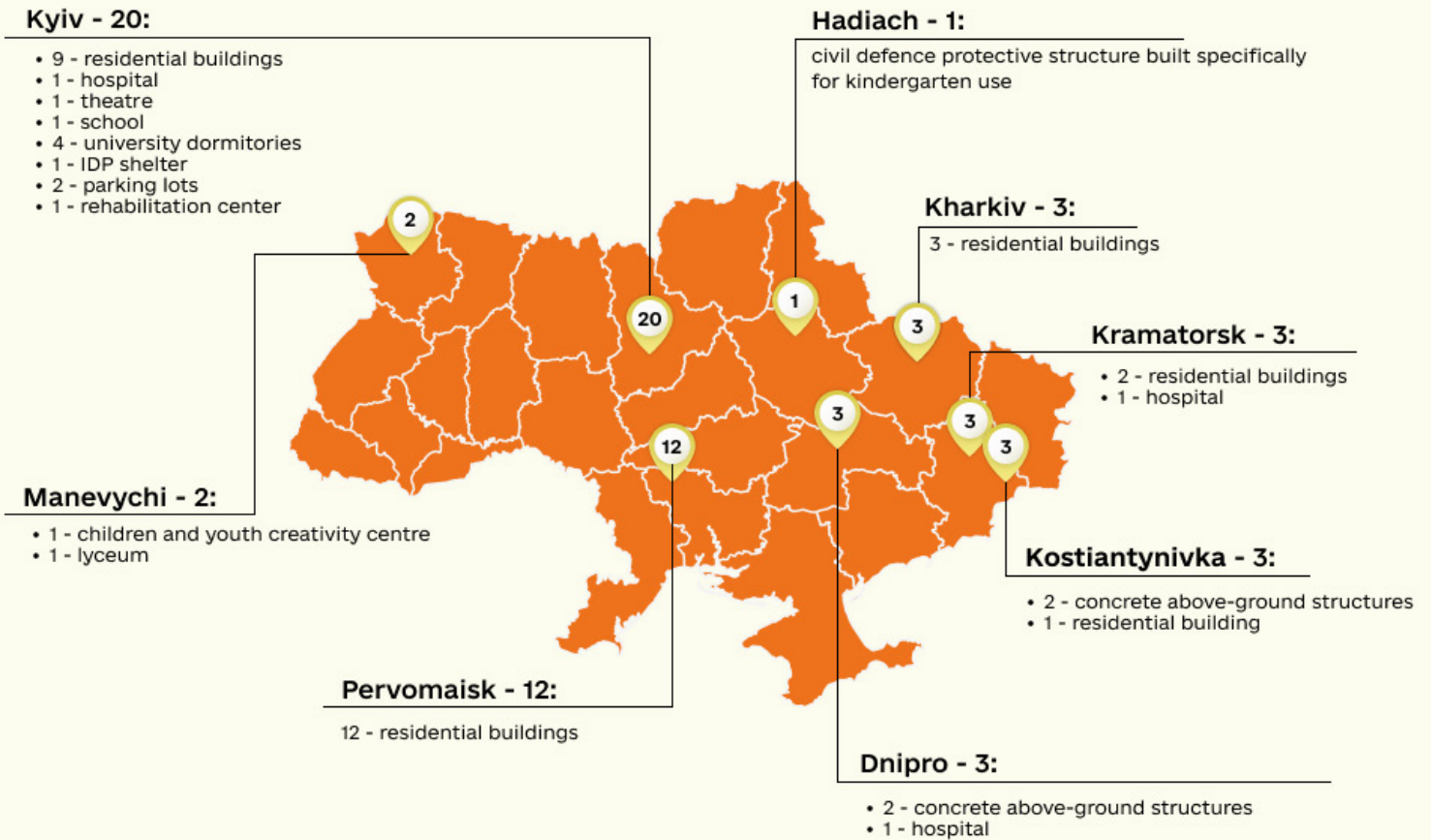
# Analysis of shelter accessibility for PRM in selected regions

**Results of accessibility assessments of civil defence protective structures in Kyiv (20 locations) and Dnipro, Kharkiv, Kostiantynivka, Kramatorsk, Hadiach, Manevychi and Pervomaisk (3 locations in each city).**

From August to December 2023, the FFR team conducted assessment of 20 shelters in Kyiv and 3 shelters in each of the following cities: Dnipro, Kharkiv, Kostiantynivka, Kramatorsk, Hadiach, Manevychi and Pervomaisk. The assessment covered shelters located in residential apartment buildings, university dormitories, schools, hospitals and residential building's underground parking lots.



## List of civil defence protective structures in selected regions, assessed in the course of fieldwork



Infographic showing the locations of civil defence protective structures in selected regions, assessed during fieldwork. It is a solid orange outline map of Ukraine. In the bottom left part of the image there are project logotypes. On the map, there are white circles with numbers of assessed locations. The circles mark the locations where assessment took place. According to the map, the assessment in Kyiv covered 9 residential buildings, 1 hospital, 1 theatre, 1 school, 4 university dormitories, 2 parking lots, 1 IDP shelter, and 1 rehabilitation centre, in Dnipro – 2 concrete above-ground structures and 1 hospital, in Kharkiv – 3 residential buildings, in Kostiantynivka – 2 concrete above-ground structures and 1 residential building, in Kramatorsk – 2 residential buildings and 1 hospital, in Hadiach – a civil defence protective structure built specifically for kindergarten use, in Manevychi – 1 children and youth creativity centre and 1 lyceum, in Pervomaisk – 12 residential buildings.



Information and direction signs reading “Shelter” and “Defence structure”. Some of them are handwritten in red paint on the walls, and some are made with red paint using a stencil. The arrows indicating the shelter location are often obscured by paper advertisements.

### Information and direction signs:

- lack of unified standard of sign design and placement along the paths of travel and at the entrances to CDPS;
- during assessment a variety of sign variants was found with neither being compliant with the accessibility requirements;
- in many cases the signs were completely absent and substituted with barely legible painted inscriptions;
- tactile information signs were completely absent.



Entrances to shelters in different locations featuring barriers for people with disabilities; the doors are mostly outdated and worn out, too massive and narrow, the stairs are not accompanied by ramps or lifting platforms.

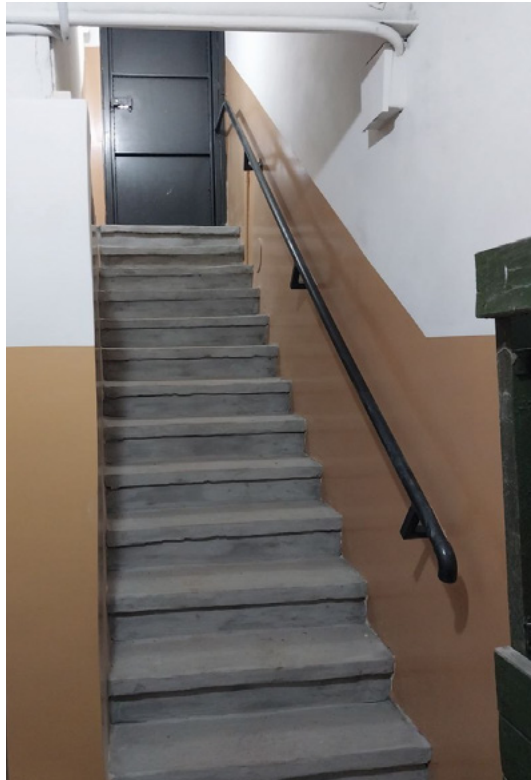
### Entrances:

- the entrances to the CDPS assessed in different locations do not comply with the accessibility requirements – independent entry of PRM to the shelter is practically impossible;
- in 99% of cases the entrances are equipped with stairs not accompanied by a ramp or a lifting platform;
- in most cases the entrance doors are physically outdated and worn out, narrow, with thresholds and inaccessible door handles, often equipped with latches, and require excessive effort for opening.

### Staircases by the entrance:

- a typical descent to the CDPS premises is a stairway that a priori excludes the structure's accessibility for PRM, especially for people with disabilities, people using mobility aids, people with locomotor

dysfunctions (including temporary dysfunctions), the elderly, people accompanying small children, etc.



Stairways leading to shelter entrances, not accompanied by ramps or lifting platforms which exclude barrier-free access for people with disabilities. Most of the depicted stairways are damaged and poorly lit, too narrow and without proper contrasting marking of the steps.

- none of the assessed shelters have stairways equipped with a lifting device, which is the only option for ensuring barrier-free access to CDPS premises;
- none of the assessed shelters have contrasting marking on the stairs;
- in many cases the stairways are not equipped with handrails, and where such handrails are installed they do not comply with the accessibility requirements neither in terms of design, nor in terms of placement;
- in some of the assessed CDPS the width of the stairway does not comply with the standards, and the steps are damaged and are not marked to comply with the accessibility requirements;
- in some of the assessed CDPS the stairways are not provided with sufficient lighting.

#### **Horizontal circulation (passageways, corridors):**

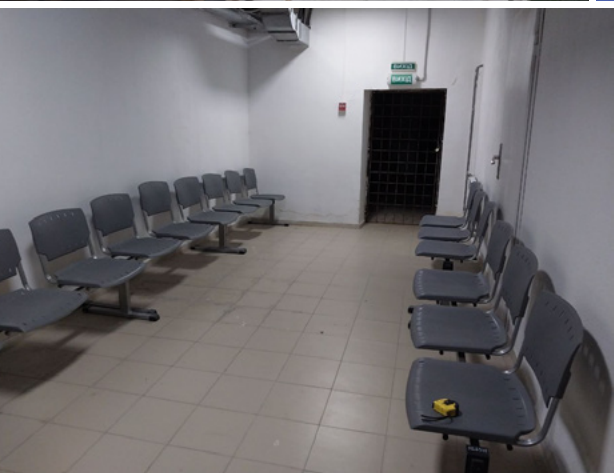
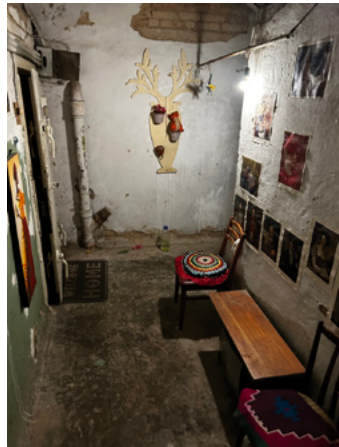
- in most of the assessed CDPS the horizontal circulation is hampered by insufficient lighting, damaged flooring, multiple changes in level along the passageways and thresholds in doorways;
- in many assessed shelters the width of the passageways does not comply with standards that makes movement difficult for PRM, especially for people with disabilities, people using mobility aids, people with locomotor dysfunctions (including temporary dysfunctions), the elderly, people accompanying small children, etc.
- in most of assessed CDPS the wall and ceiling finishes are damaged, often covered in mold and fungus;
- in many assessed shelters safe movement is obstructed by openly installed utilities – water and sewer pipes, wiring, elements of outdated utility equipment (valves, brackets, boxes, etc.);
- many of the assessed shelters have floor level changes (solitary steps) and areas with reduced vertical clearance (crosspieces, low ceilings);
- none of the assessed shelters is equipped with neither visual, nor tactile accessibility features and signage.



Corridors and passageways inside the shelters. Most of them are in poor technical condition and contain various barriers. Mold on the walls indicates a high humidity level. In some places movement is hampered by pipes and other utilities.

### **Furniture and equipment:**

- in most of the assessed shelters the premises are furnished with outdated furniture units, and some places are cluttered with scrap, construction rubble and other waste;
- concerns arise over the safety of food supplies (mostly canned) and bottled water stored in some of the shelters as no indication of their origin or expiry dates is available;
- the placement and technical condition of furniture often pose safety risks, creating discomfort and tripping hazards.



Premises inside shelters. Some are decorated with children's drawings and national flags hung on the walls. Some premises contain bottled water storage areas. The spaces are mostly poorly maintained and cluttered with outdated and damaged furniture units.

### Sanitary facilities:

- sanitary facilities were found in less than 10% of the assessed CDPS;
- none of the assessed sanitary facilities complies with accessibility requirements – neither wheelchair user accessible toilet rooms, nor any equipment for PRM are provided;
- at the same time, the spatial dimensions of the existing sanitary facilities are often insufficient for setting up accessibility features for



Sanitary facilities in shelters. Some of them are equipped with toilets, access to which is obstructed by thresholds, steps and narrow doorways. Several toilet rooms have neither toilets, nor sinks. Soap and toilet paper are available only occasionally.

PRM without substantial replanning and/or complete replacement of sanitary utilities (primarily – water supply and sewage systems);

- it is notable that accessibility for PRM is not provided even in those shelters that have been renovated within the last year.

## Fieldwork conclusions:

1. the walkways and adjacent areas feature multiple barriers (kerbs, steps, damaged paving) that prevent free and unobstructed access of people with disabilities and other people with reduced mobility to shelters;
2. direction signs pointing to shelters do not comply with accessibility requirements and do not provide proper orientation – primarily for people with vision impairments and the elderly;
3. no shelter is equipped with an accessible entrance making independent entry impossible for people with disabilities and other people with reduced mobility (most entrances feature stairways with one or more flights);
4. passageways inside the shelters also feature multiple barriers (utilities, thresholds, steps, etc.) that prevent free independent movement of people with disabilities and other people with reduced mobility – even if they managed to enter the shelter with outside assistance;
5. most of the shelters lack functional furniture (mostly improvised seating made of damaged furniture units and materials at hand is available) which makes lengthy comfortable stay of large number of people (for example, residents of a multi-storied apartment building) impossible;
6. many shelters lack or feature insufficient lighting and power outlets;
7. most of the shelters lack not only sanitary facilities, but also water and sewage outlets, which makes it impossible to arrange sanitary facilities without capital construction works;
8. most of the shelters are characterized by excessive humidity, lack of ventilation, and mold on walls and ceilings, which altogether pose serious health risks for people, especially in case of lengthy stay during prolonged air raid alarms and massive shellings;
9. shelters in residential buildings (basements) remain the most poorly maintained.

The assessments conducted in Kyiv and other regions, as well as the analysis of completed checklists indicate that ensuring accessibility of existing (assessed) civil defence protective structures (in compliance with DBN B.2.2-40 “Inclusivity of buildings and structures. Basic provisions” and DBN B.2.2-5:2023 “Civil defence protective structures”) requires complex construction works, including:

- substantial interference with constructive elements (load-bearing walls);
- replanning (altering premises configuration and dimensions);
- dismantling of certain elements (to widen the doorways and corridors);
- floor leveling to eliminate level changes inside the shelters;
- installation of additional equipment – lifting platforms, sanitary ware, ventilation, etc.

In many cases considerable amounts of excavation work is necessary for the construction of entrance ramps. The existing (assessed) shelters’ accessibility cannot be achieved solely by the efforts of civil society organizations without authorization from the local government and building residents or communal institutions’ administration and building residents.

## Annex 1

### Assessment Tool (checklist and report)



Support to Civil Society  
Organisations in Ukraine

## Shelter Accessibility Audit Checklist

*located at (full address – city, street, house number)*

---

---

### Tools for audit:

- this Checklist (printed version) + pen or pencil
- tape measure (regular (5-10 m) and/or digital) – *for measuring distances and dimensions*
- angle meter (digital or mobile application on a smartphone; an angle meter is often a function of a digital tape measure) – *for measuring angles of pedestrian walkways, ramps, stairs, etc.*
- camera / smartphone – *for taking photos*
- plan/scheme of territory and/or premises (*if available*)

The audit should be conducted in pairs (preferably in teams of three), which provides for proper allocation of responsibilities regarding measuring, filling out the checklist and taking photos.

The completed Checklist is the basis for the preparation of the Report (the Report form is provided in the Annex).

## 1. Adjacent Area

Location	Presence / Condition
Condition of the pavement / pedestrian walkway (from the entrance/entrances to the building, the nearest public transport stop and adjacent road)	
Width of the pavement / pedestrian walkway (from the entrance/entrances to the building, the nearest public transport stop and adjacent road)	
Dropped curbs on the pavements / pedestrian walkways (from the entrance/entrances to the building, the nearest public transport stop and adjacent road)	
Changes in level (curbs, steps, etc.) and tactile warning strips on pedestrian	

<p>travel paths (from the entrance/entrances to the building, the nearest public transport stop and adjacent road)</p>	
<p>Surface water drains on pedestrian travel paths (from the entrance/entrances to the building, the nearest public transport stop and adjacent road), surface water drain openings' dimensions</p>	
<p>Other barriers on pedestrian travel paths (posts, bollards, equipment, etc.) (from the entrance/entrances to the building, the nearest public transport stop and adjacent road)</p>	
<p>Signage (orientation, directional, informative signs), indicating the direction of travel to the shelter, on pedestrian travel paths (from the entrance/entrances to the building, the</p>	

nearest public transport stop and adjacent road) – placement height and size of signs, font size, colour contrast	
Tactile directional strips on pedestrian travel paths (from the entrance/entrances to the building, the nearest public transport stop and adjacent road)	
Additional comments	

## 2. Entrance to the Shelter \*

Location	Presence / Condition
Shelter informative sign – placement and placement height, sign size, font size, colour contrast	
Stairs (material, overall height, number of flights, flight width, step rise and going, edge markings, presence of tactile warning strips, overall	

condition)	
Stair handrails (height, material, extensions, etc.)	
Canopy over stairs (height)	
Ramp (material, slope, width, horizontal landings, presence of tactile warning strips, overall condition)	
Clear ground space in front of the ramp (an unobstructed area of 1,5 m by 1,5 m)	
Ramp handrails (height, material, extensions, etc.)	
Canopy over ramp (height)	
Lifting platform (type)	
Lifting platform control panel / call button placement height	
Canopy over lifting platform (height)	

Additional comments	
---------------------	--

**\* in case of several entrances – each entrance should be audited separately**

**3. Entrance Door \***

Location	Presence / Condition
Clear ground space in front of the door (horizontal maneuvering space dimensions)	
Entrance door (doorway width, presence of a threshold and its dimensions, marking, type of door handle, mode and ease of door opening)	
Lobby and its dimensions	
Flooring (material, condition) at the entrance (including presence of rugs, grates, etc.)	
Additional comments	

**\* in case of several entrances – each entrance should be audited separately**

**4. Horizontal Circulation (corridors, doorways)**

<b>Location</b>	<b>Presence / Condition</b>
Width	
Obstacles (protruding objects) along the circulation paths	
Thresholds and other changes in level	
Seatings and their dimensions	
Handrails on corridor walls (height, condition)	
Flooring material and condition	
Additional comments (humidity, lighting, fire emergency alarm system, etc.)	

### **5. Main Premise \***

<b>Location</b>	<b>Presence / Condition</b>
Doors (doorway width, type of door handles)	
Clear floor spaces on both sides of the doors and their dimensions	

Premise dimensions (height of ceiling, width, length)	
Light switches – presence, quantity, placement height, functionality	
Electrical wall socket outlets – presence, quantity, placement height, marking (220V) and functionality	
Other equipment (type – seating, other furnishings, etc.)	
Quantity of seats	
Coat hooks – placement and placement height	
Additional comments (humidity, lighting, flooring material and colour, colour of walls)	

**\* in case of several premises – each premise should be audited separately**

**6. Toilet Room \***

Location	Presence / Condition
----------	----------------------

Door (doorway width, thresholds, type of door handle and lock)	
Room dimensions (height of ceiling, width, length)	
Type, colour and condition of flooring surface	
Light switches – placement height, type and functionality	
Clear floor space on both sides of the door and its dimensions	
Toilet seat (height, flushing mechanism)	
Clear floor space in front of the toilet and its dimensions	
Presence of grab rails on both sides of the toilet (placement and placement height, type of grab rails, material, condition)	
Toilet paper	

dispenser (placement and placement height)	
Waste bin (type, placement)	
Washbasin (placement and placement height, distance from the tap controls from the front of the washbasin, type of tap controls, unobstructed space (knee clearance) under the washbasin)	
Grab rails by the washbasin (placement and placement height, type of grab rails, material, condition)	
Mirror (placement and placement height, possibility to change the angle of the mirror)	
Soap dispenser (placement and placement height, mode of use)	
Paper towel dispenser (placement and placement height)	

Coat hooks (placement and placement height)	
Crutch holders (placement and placement height)	
Shelves (placement and placement height)	
Additional comments (humidity, lighting, ventilation, etc.)	

**\* in case of several toilet rooms – each toilet room should be audited separately**

**7. Additional comments / observations**

# Shelter Accessibility Audit Report

*located at (full address – city, street, house number)*

---



---

## 1. Adjacent Area

Location	Presence / Condition	Photos

## 2. Entrance to the Shelter

Location	Presence / Condition	Photos

## 3. Entrance Door

Location	Presence / Condition	Photos

## 4. Horizontal Circulation (corridors, doorways)

Location	Presence / Condition	Photos

### 5. Main Premise

Location	Presence / Condition	Photos

### 6. Toilet Room

Location	Presence / Condition	Photos

### 7. Additional comments / observations

This publication is implemented by NGO Fight For Right thanks to a grant received from the Program «Support of civil society organizations (CSOs)» in Ukraine within the financial support of the Embassy of Great Britain. The program is implemented by Crown Agents in partnership with International Alert and in cooperation with Crown Agents in Ukraine.

The content of publication does not necessarily reflect the views of the Embassy of Great Britain, the views of Crown Agents, International Alert and Crown Agents in Ukraine.

**FIGHT  
FOR  
RIGHT**



Foreign, Commonwealth  
& Development Office



**CROWN AGENTS**  
ACCELERATING SELF-SUFFICIENCY & PROSPERITY



international  
**alert**



Support to Civil Society  
Organisations in Ukraine